

Main Features:-

- ◆ Stainless Butterfly valve wafer type
- ◆ DN50 to DN250 PN10
- ◆ Disc made of Stainless Steel 1.4408
- ◆ Working Temperature -25°C to + 180C *
- ◆ PTFE body seat on EPDM backseat

*Temperature and pressure determined by valve body, seat etc.

Suitable Applications & Approvals:



HVAC



OIL



GAS



INDUSTRY



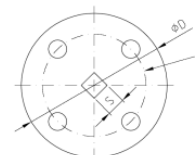
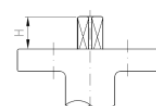
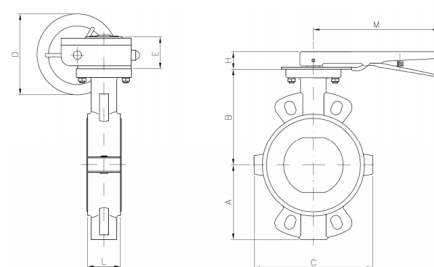
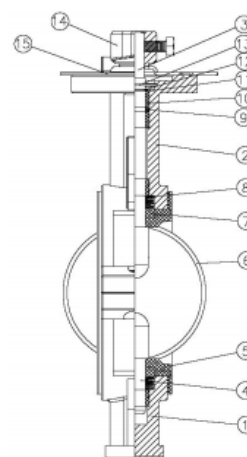
SERIES: 80101

MANUFACTURER: **GENEBRE**

VALVE MATERIALS/DIMENSIONS

ITEM	SECTION	MATERIAL	ADDITIONAL INFO / OPTIONS
1	Downside Body	SS 1.4408	Shot Blasting
2	Upside Body	SS 1.4408	Shot Blasting
3	Upside Stem	AISI 316	n/a
4	Downside Stem	AISI 316	n/a
5	Seat	PTFE on EPDM	Spare Part Code ET2104
6	Disc	SS 1.4408	Shot Blasting
7	Hub	RPTFE	n/a
8	Spring Washer	AISI 301	n/a
9	O'Ring	Viton	n/a
10	Bush	RPTFE	n/a
11	Washer	AISI 304	n/a

REF	DN	PN	L	A	B	C	H	Kg	S	D
80101-09	50	16	43	74	136	117	32	2.7	11	65
80101-10	65	16	46	82	138	1266	32	3.3	11	65
80101-11	80	16	46	90	138	142	32	3.6	11	65
80101-12	100	16	52	116	158	178	32	5.4	14	90
80101-13	125	16	56	132	174	202	32	7.4	14	90
80101-14	150	16	56	145	190	234	32	10.5	14	90
80101-16	200	16	60	180	229	286	45	18.1	17	125
80101-18	250	16	68	210	264	338	45	24.9	22	125



T +44 (0)1386 552369

E sales@allvalves.co.uk

W www.allvalves.co.uk

F +44 (0)1386 554227



Genebre are a global brand of industrial valves with large stocks held for fast delivery on various type of valves, sizes, end connections and materials.

SERIES: 80101

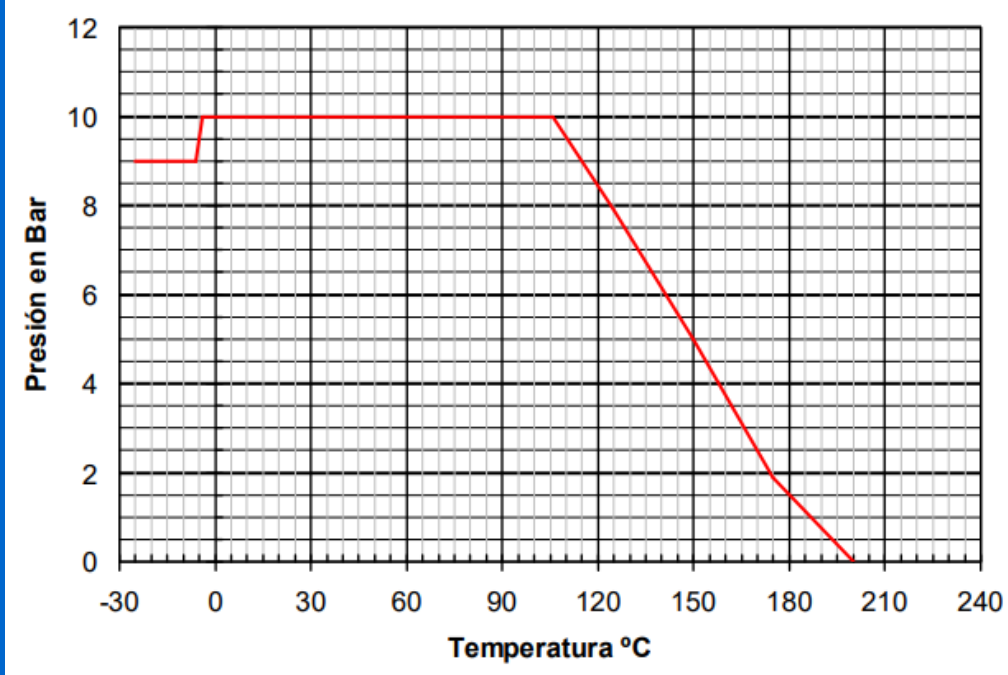
DISC POSITION/PRESSURE CHART

DN	90°	80°	70°	60°	50°	40°	30°	20°	10°	Kv Values
50	125	99	73	53	37	23	14	6	0.9	
65	244	193	141	93	58	39	21	10	1.3	
80	399	315	231	133	83	53	30	13	1.7	
100	727	606	429	237	148	94	54	23	2.6	
125	1190	991	670	370	232	147	85	37	4	
150	1600	1334	887	490	306	195	112	48	5	
200	2868	2458	1610	935	588	364	208	88	10	
250	4713	3927	2558	1484	933	578	331	140	16	

Flow rate of water in cubic meter per hour (m³ /h) that will generate a pressure drop of 1 bar across the valve.

PRESSURE TEMPERATURE RATING

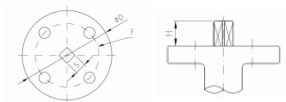
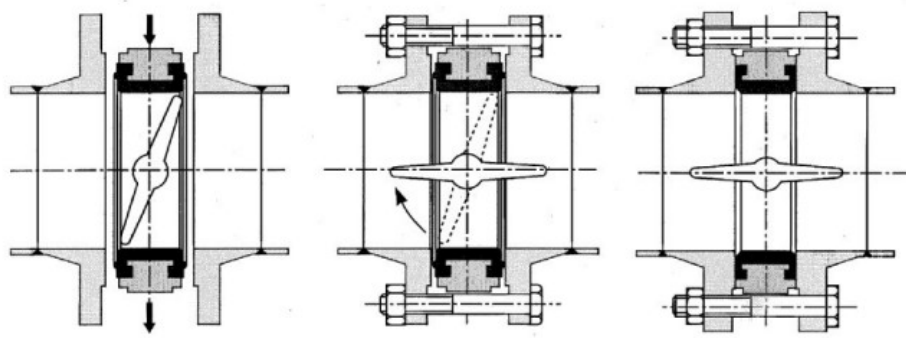
ISO 5211 & TORQUES



SIZE	ISO	TORQUE
50	F05 x 11	20
65	F05 x 11	25
80	F05 x 11	30
100	F07 x 14	60
125	F07 x 14	100
150	F07 x 14	180
200	F10 x 17	300
250	F10 x 22	400

Genebre recommend that you add 25% safety factor to the above torque figures when sizing your actuators.

SIZE	S	D	H
50	11	65	32
65	11	65	32
80	11	65	32
100	14	90	32
125	14	90	32
150	14	90	32
200	17	125	45
250	22	125	45



T +44 (0)1386 552369
 E sales@allvalves.co.uk

W www.allvalves.co.uk
 F +44 (0)1386 554227